

**Supervisor 9**

# **Release Notes**



© Copyright 2025 Datamine Corporate Ltd

All Rights Reserved Confidential and Proprietary

Published: Monday, 7 July 2025

The information contained in this documentation is subject to change without notice and is not warranted to be error-free. This documentation contains confidential information proprietary to Datamine Corporate Ltd which must not be disclosed, copied, or distributed to any third party without prior written consent of Datamine. Any unauthorised use or disclosure of this information would constitute a breach of confidentiality and would result in legal action.



# Contents

---

Overview .....	4
Further Information .....	4
Supervisor 9.1.1 Hot Fix Release Notes (July 2025) .....	5
Defect Fixes .....	5
Supervisor 9.1 Release Notes (May 2025) .....	7
New features & Improvements .....	7
Defect Fixes .....	13
Supervisor 9.0.4 Hot Fix Release Notes (October 2024) .....	18
Improvements .....	18
Defect Fixes .....	18
Supervisor 9.0.3 Release Notes (April 2024) .....	20
Upgrading a Version 8 project .....	21
Updating the License Manager .....	22
Changelog .....	23
Known Issues .....	25



# Overview

---

Supervisor is a powerful, user-friendly geostatistical suite that optimises resource estimation and enhances productivity for mineral resource geologists. Trusted by leading mining and consultancy companies worldwide, it offers advanced tools like variography, conditional simulation, and model validation, ensuring that mineral resources are calculated with maximum accuracy. Built by geologists for geologists, Supervisor streamlines complex geological tasks, saving valuable time and enabling efficient decision-making. Its intuitive interface and clearly presented data make it easy to model orebody characteristics from raw sample data, providing everything needed to optimise resource estimates and deliver high-quality, robust results.

## Further Information

This document includes cumulative release notes for Supervisor.

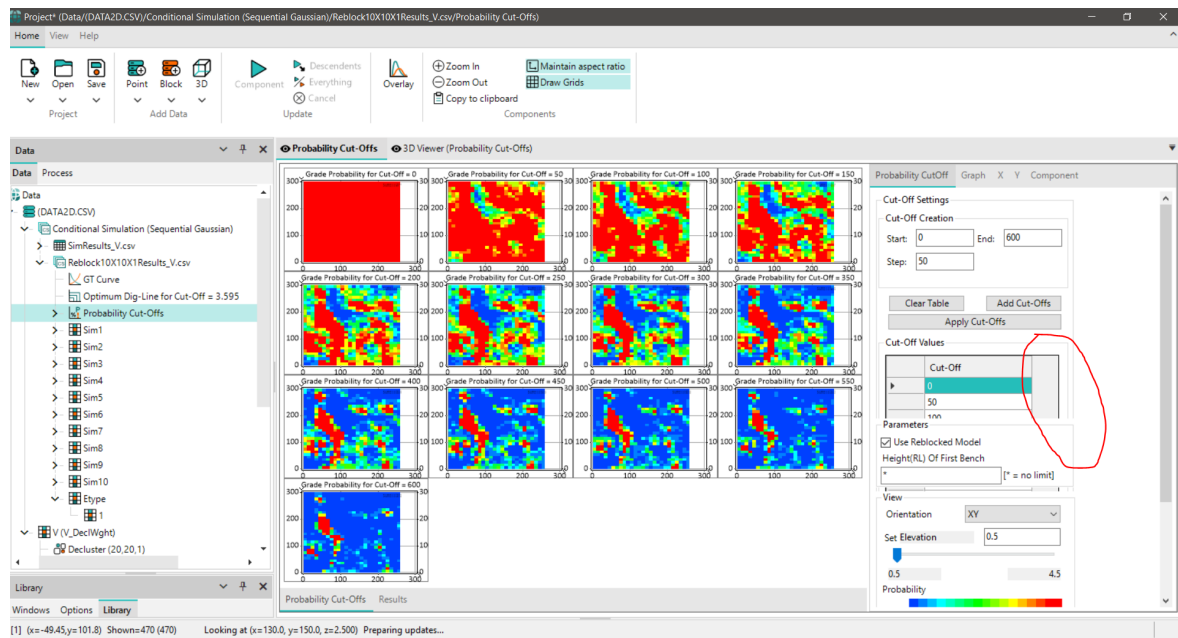
Release notes for other versions of Supervisor are available via the Support Portal <https://dataminesoftware.com/support/>.



# Supervisor 9.1.1 Hot Fix Release Notes (July 2025)

## Defect Fixes

- A crash or an error could occur **when closing a project**.
- Several **installer issues** have been fixed:
  - **DmFile.dll** was not registered correctly,
  - Too recent DLLs already present in the installation directory were not overwritten.
- When using **2D data** files, the **reload of associated output block models** (KNA, LKNO, conditional simulations), in 2D too, failed because of their flat dimension (dz=0).
- A first correction has been made in 9.1 to avoid the issue that prevented users from **scrolling to the bottom of the Project tree**. Another correction is provided with this version as the problem was persistent.
- Since the 9.1 version, some **table's scrollbars** on property panels have disappeared.



- The **2D rotation** associated with a **Datamine block model** was not correctly detected by the import (in the Rotate Data in 2D tab) if the two ROTAXIS2 and



ROTAXIS3 columns were not equal respectively to 2 and 1. The content of these columns is now ignored.

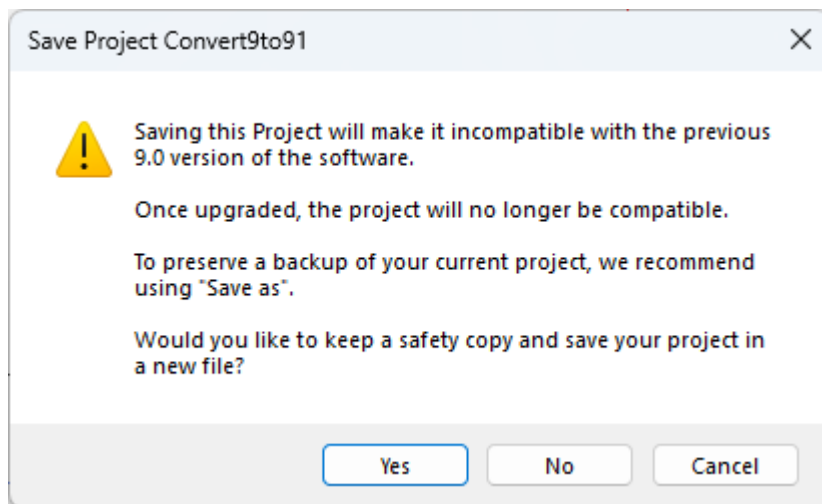


# Supervisor 9.1 Release Notes (May 2025)

---

## New features & Improvements

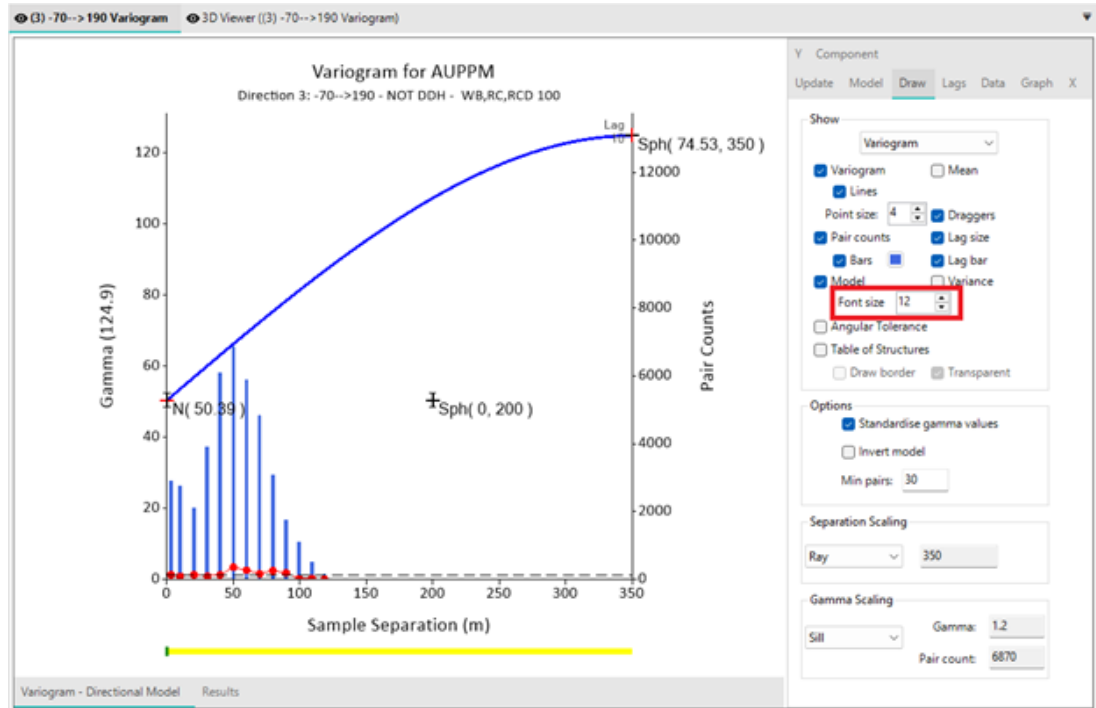
- **Installation & project upgrade:**
  - **DirectX** redistributables are now embedded in the installation. The installation of DirectX 9 runtime is no more required.
  - The **default installation folder** has been changed to **C:\Program Files\Datamine\Supervisor**. This modification is applied for a new installation. When upgrading from the previous version, the folder remains C:\Program Files\Snowden\Snowden Supervisor v9.0.
  - The **splash screen** visible when launching Supervisor 9.1, as well as the application icon, have been updated according to the new Datamine branding.
  - A message is popped up when asking to **save a 9.0 project in 9.1**, as it will make the **project incompatible**. To help you manage backward compatibility, we recommend to save your project in a new file. This creates an upgraded version of the original project, keeping a safety copy of the previous version intact.



- **Help:** The **email box** in the **user feedback** form (reachable under the Help menu) was previously mandatory. You can now optionally provide us with contact details so that we can discuss your feedback and ideas with you directly.
- **Variography improvements:**



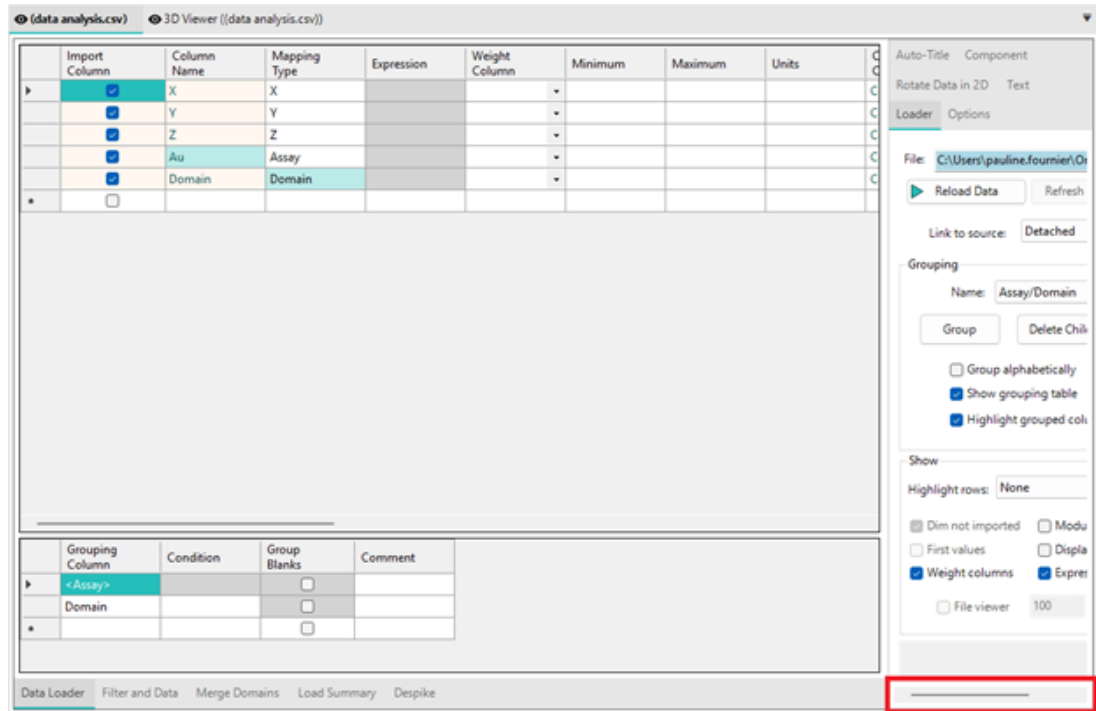
- As Leapfrog no longer has any restrictions on the number of allowable structures for variogram models, the **2-structure restriction has been removed from the export** functionality when using the **Leapfrog compatibility** mode (\*.lfv). The restriction is still present when exporting in a \*.xml file but it is not limited anymore to the spheroidal structure only.
- The **font size** of the **variogram model structures** displayed next to the different draggers can now be changed in the Draw tab.





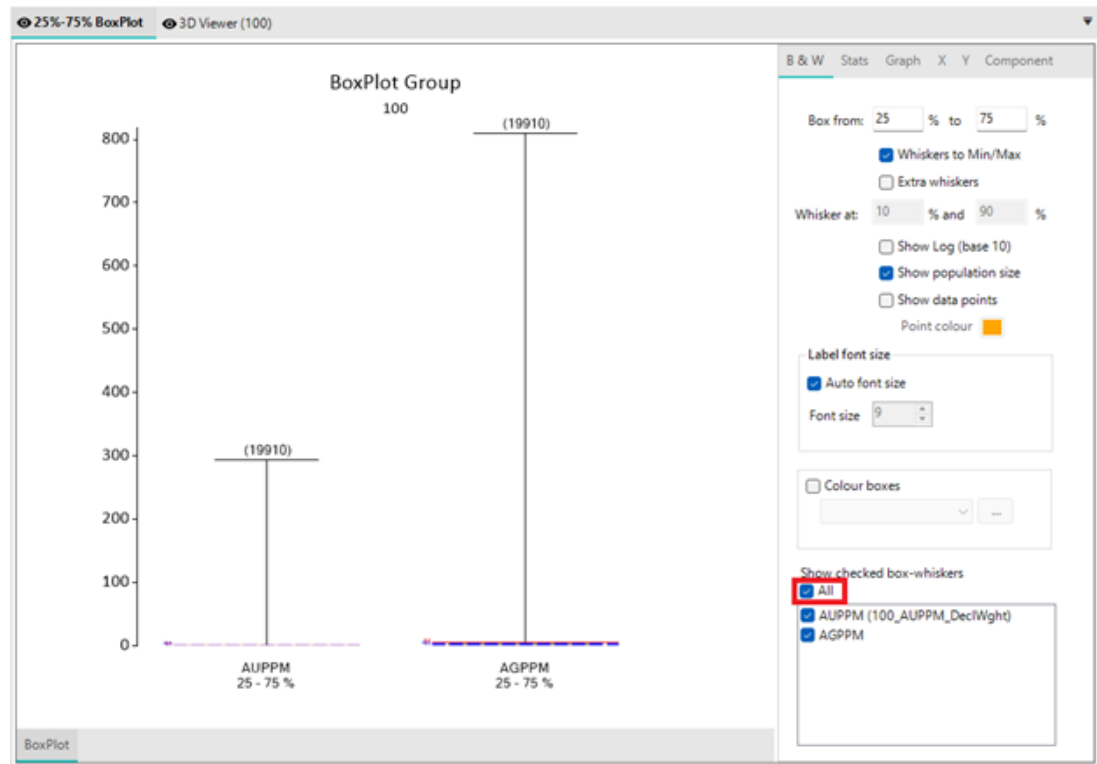
- **UX improvements:**

- A **scroll bar** has been added in the **Data Loader** property panel.



- When using the **boxplots**, if you wanted to select only few items, you had to untick all the others. This could be painful if you had lots of items in the list. An '**All**' checkbox has been added to the boxplot selection

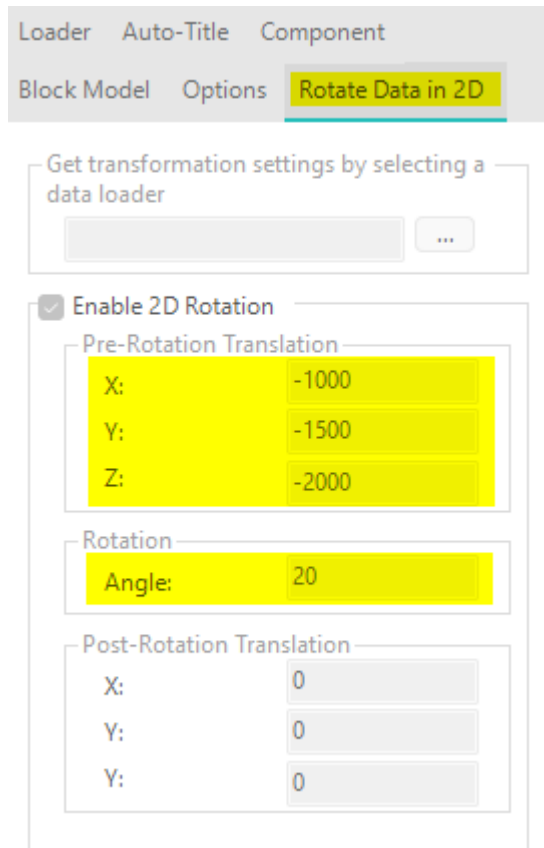
select/unselect all checkboxes at once.



- **Rotations:**

- A new **Rotate Data in 2D** tab is available in the property panel of the **Data Loader** to deal with 2D rotation in Datamine block models. When importing rotated Datamine block models, Supervisor imports the XC, YC, ZC columns which are local rotated world coordinates. By consequence, block model data cannot be compared to data located in real world, like drillhole data for example and then apply a model validation or KNA.

Clicking on the grid loader, angle and X/Y/Z translation fields show you if the original file was rotated or not. They specify which transformations should be applied to convert any data in the real coordinate system into the local coordinate system.



Loader Auto-Title Component

Block Model Options **Rotate Data in 2D**

Get transformation settings by selecting a data loader

...

☒ Enable 2D Rotation

Pre-Rotation Translation

X:	-1000
Y:	-1500
Z:	-2000

Rotation

Angle:	20
--------	----

Post-Rotation Translation

X:	0
Y:	0
Y:	0

When reaching the properties of your drillhole data, by selecting your block model in the **Get transformation settings by selecting a data loader** field, you will automatically define the angle and the translation along X, Y and Z to apply to your drillholes to be in the same local coordinates as your block model.

Auto-Title   Component

Loader   Options   **Rotate Data in 2D**

Get transformation settings by selecting a data loader

**Data/simple\_rot\_grid.dm** ...

☒ Enable 2D Rotation

Pre-Rotation Translation

X: -1000

Y: -1500

Z: -2000

Rotation

Angle: 20

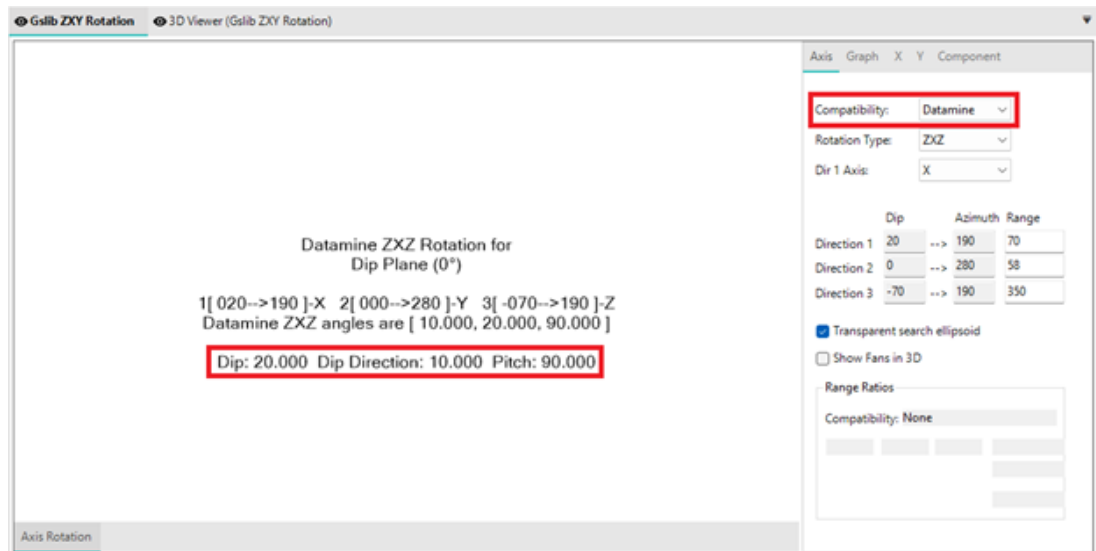
Post-Rotation Translation

X: 0

Y: 0

Y: 0

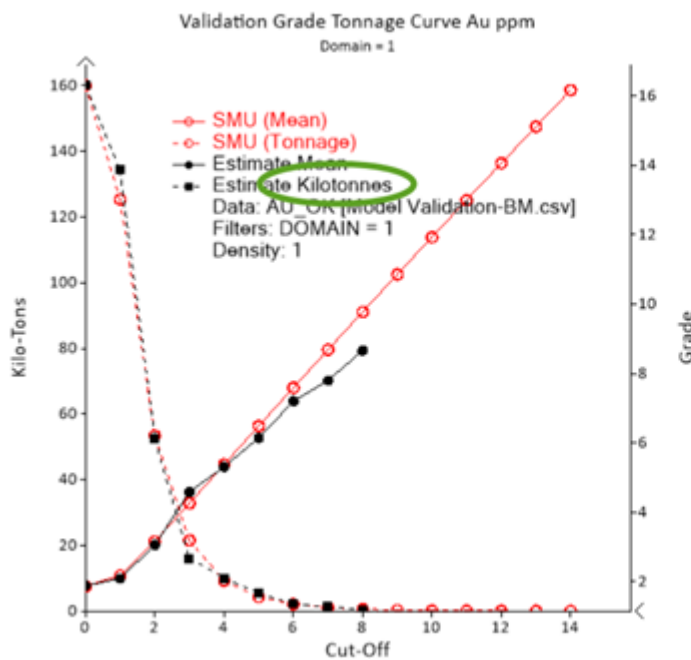
- In the **Continuity Models**, **Datamine** compatibility output has been modified to be the same as Leapfrog. You have now an additional text with Dip, Dip Direction, Pitch.



- **Other:** An error message has been added if you try to import **.dmx** files. This new Datamine format is not yet supported but it will be available in the 9.2 version.

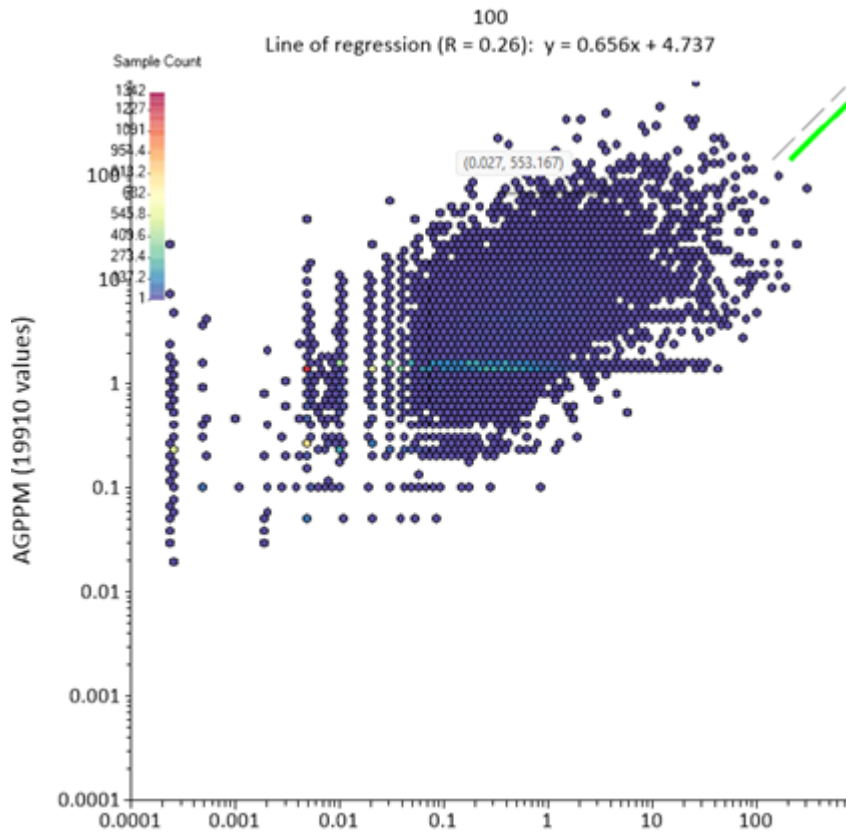
## Defect Fixes

- In the **GT Curve**, when unticking the Auto-title and modifying the title in the properties panel, the axis label was correctly set but the associated **legend** remained unchanged.

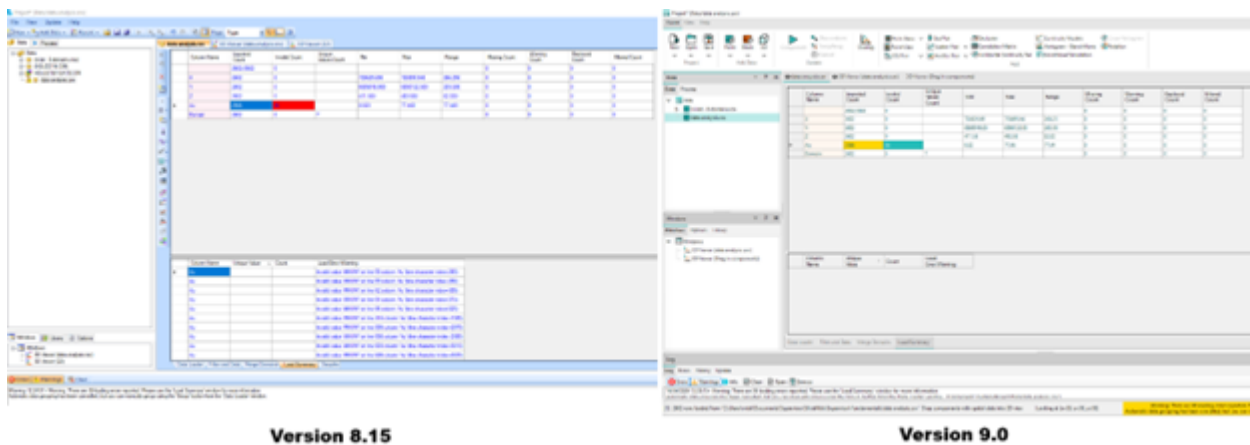


The image shows the properties panel for the "GT Curve" component. The "Y" tab is selected. Under the "Kilo-Tons" section, the "Y Title" is set to "Kilo-Tons" and the "Y Thumbnail" is set to "Kilo-Tons". A green oval highlights these two fields. Other settings include "Log scale" (unchecked), "Draw grid" (unchecked), "Y Ticks" (Auto tick checked, Min: 0, Interval: 20), "Y Min/Max" (Auto min/max unchecked, Min: 0, Max: 166.2), and "Y Annotate" (Draw: Left, Horiz checked).

- In the **HexBin plot**, the **line of regression** and the first bisector line were obscured by the hex elements when applied on the **Log10** transformation. Both lines are now displayed as foreground.

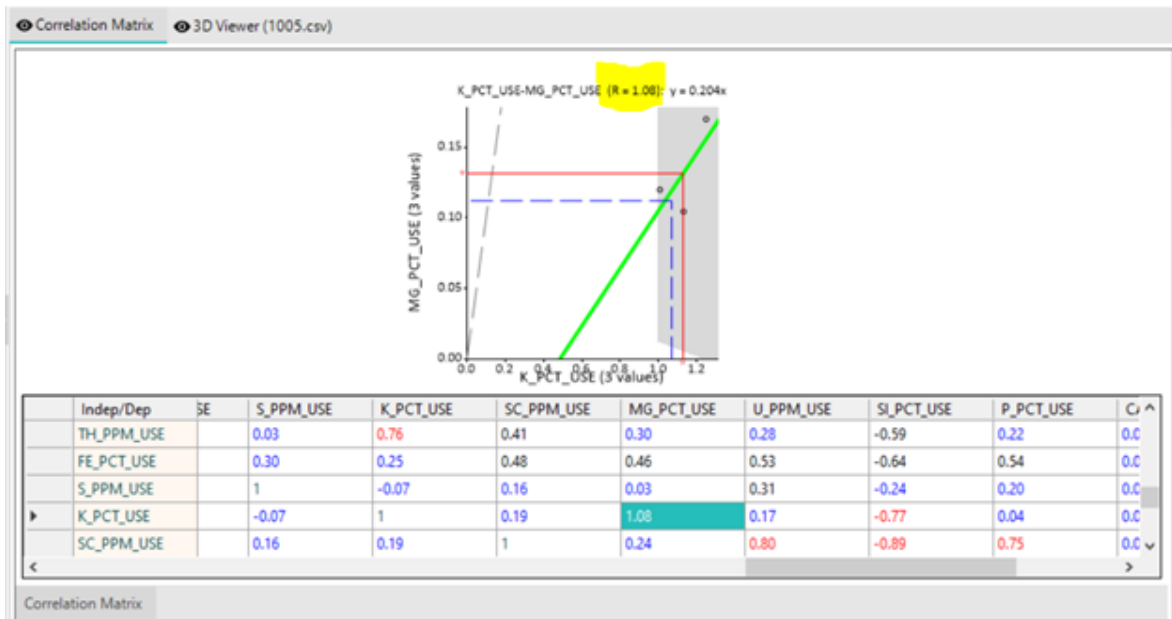


- The **Load Summary** did not **report the warnings/errors** anymore. The area, below the load table, was empty.



- The **copy-paste** between projects, broken in version 9, has been corrected.
- Contextual Help** (F1) in version 9 did not open the correct page like it did in version 8.15. Also the documentation file as well as release notes PDF document were outdated in the installation.
- In the **Correlation Matrix** :

- Correlation coefficients displayed were wrong when applying a **filter** on the samples. This could lead to values greater than 1 or smaller than -1.



- Changing the number of **decimals** to add more precision did not work properly. The displayed number of decimals was correct, but the extra decimals displayed 0 instead of the right value. Trigger an update of the component solved the issue.

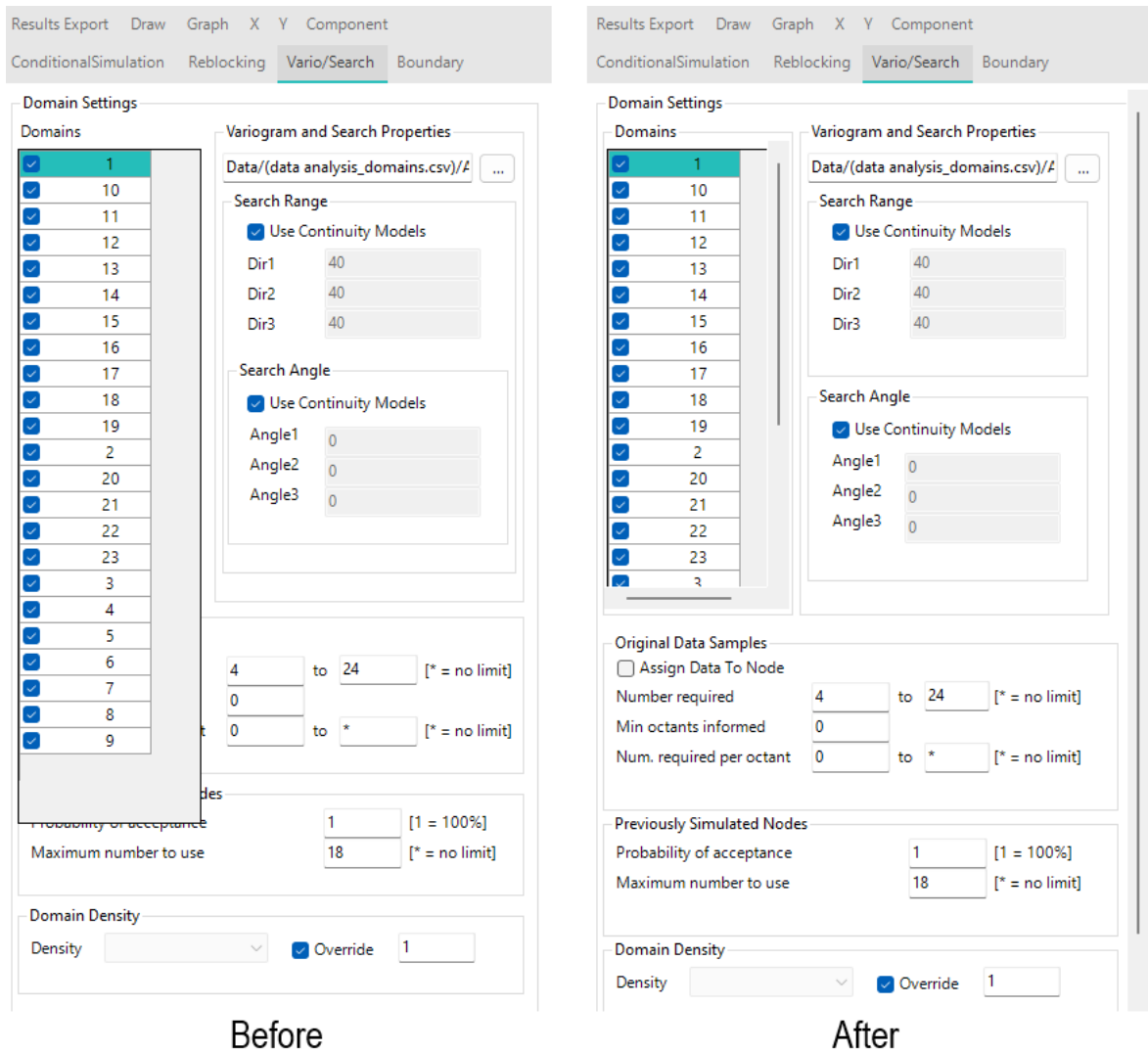
	Indep/Dep	AUPPM	AGPPM	CUPPM
▶	AUPPM	1	0.26000	0.29000
	AGPPM	0.26000	1	0.65000
	CUPPM	0.29000	0.65000	1

**Wrong behaviour in 9.0**

	Indep/Dep	AUPPM	AGPPM	CUPPM
▶	AUPPM	1	0.25949	0.29236
	AGPPM	0.25949	1	0.65212
	CUPPM	0.29236	0.65212	1

**After correction in 9.1**

- In the **Vario/Search** tab of the **Conditional Simulation** properties,
  - when dealing with lots of **domains**, the list could overlay the bottom of the interface and some parameters. A **scroll bar** has been added to avoid this problem.



- **Improved error message for missing simulation domains:** If you select a **domain** to simulate that **isn't present** in the output node grid or point set, you will no longer encounter the generic **"Index was outside the bounds of the array"** error. Instead, you'll see a clear message explaining that the chosen domain could not be found in the output data.
- An error occurred when **updating a V8 project with a detached data source**.
- In the **KNA**, the **block sizes** defined using the **Library** were not taken into account correctly.
- Multiple **Grade Tonnage Curves**, built from Block Models, can now be overlaid using the **Overlay** option. Only the colours of the first selected item are kept. The others are randomly redefined.
- An error occurred when importing a **Vulcan Bmf** file because of a missing library.





- The **SQL Data Loader** did not work. You could enter the server name, but all the other fields remained disabled.
- Several bugs linked to the **Weight** column have been corrected:
  - The **block data loader** stored default weighting entries, which caused an error when the weight column was unavailable during **reload**.
  - When importing **sub-blocks** contained in a **Datamine** file, a weight column **XINC\*YINC\*ZINC** is now created by default and is applied to all Assay columns.



# Supervisor 9.0.4 Hot Fix Release Notes (October 2024)

## Improvements

We've released a patch update for the .NET dependency integrated within Supervisor. This update includes key performance improvements, security patches, and critical bug fixes to enhance the stability and reliability of Supervisor.

## Defect Fixes

- An issue has been fixed that prevented users from scrolling to the bottom of the Project Tree.
- An issue has been fixed that caused variogram fans to sometimes be blank.

**Important:** You will need to reprocess any variograms created in Supervisor 9.0.3 for this fix to be applied. To do this, open the affected variogram and uncheck the **Analyse** checkbox in the **Update** tab of the **Property Panel**, then re-check the **Analyse** checkbox and click the **Update** button. This will cause the variogram to reprocess without making any changes to your data. The reprocessed variogram should display the normal contours.

- Multivariate Simulation decorrelation techniques now produce appropriate scatter plot results
- Process cannot access file - error during conditional simulation
- An issue has been fixed that prevented the default histogram, probability plot, and mean and variance plot from displaying beneath newly loaded assays and domains.

**Important:** To correct this issue, you may need to reset the **Library Tab** of the **Component Options** by clicking the **Reset Layout** button in the **View** tab of the **Ribbon Menu**, then closing and reopening Supervisor. After reopening Supervisor, the **Library Tab** may need to be docked to the **Component Options** window.

- An issue has been fixed that prevented the default histogram, probability plot, and mean and variance plot from displaying beneath newly loaded assays and domains.



- An issue has been fixed that prevented the Colour Key Library from loading in new projects.
- The Multivariate Simulation component no longer produces an error when the compositional transformation is used with a filler.
- An issue has been fixed where loading a project with a probability cutoff component as part of a multivariate simulation would cause an error.

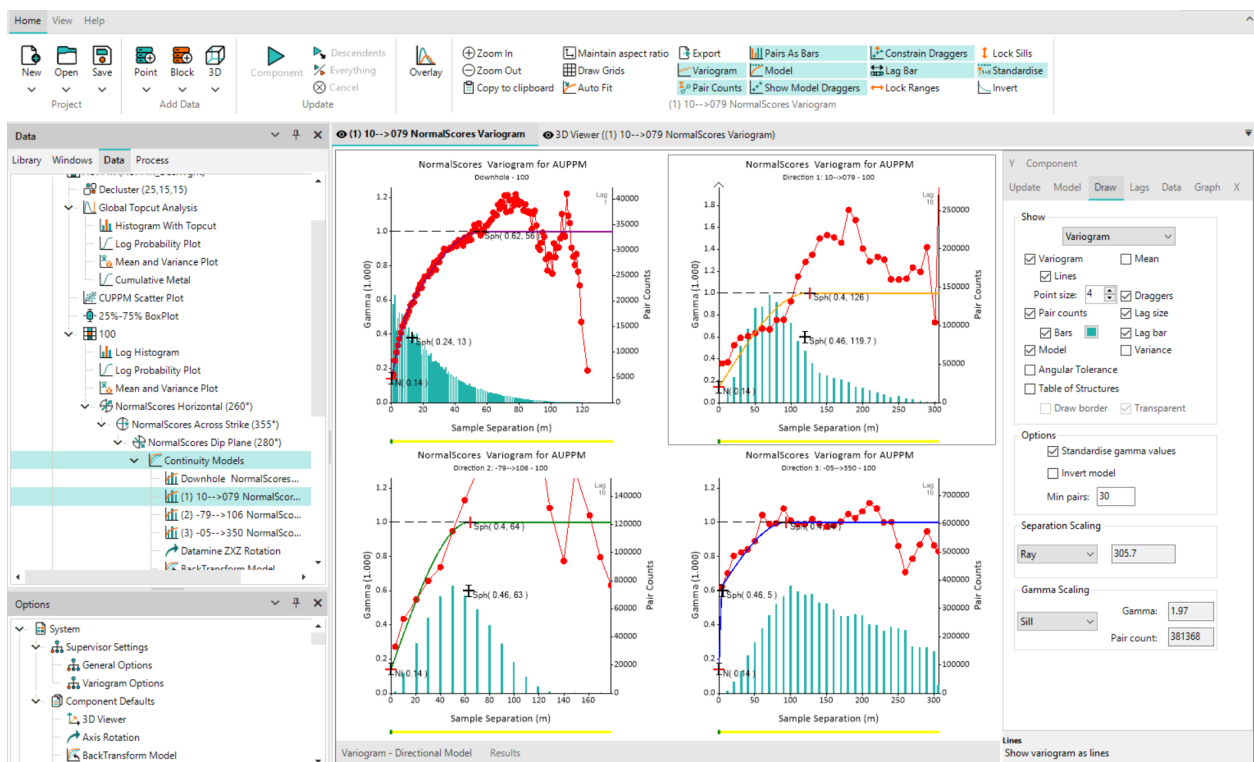


# Supervisor 9.0.3 Release Notes (April 2024)

Supervisor Version 9 brings a long-deserved and significant technology upgrade to the base platform that will allow us to continue to support and develop Supervisor well into the future. While there are some changes to the overall look, Version 9 remains an evolution of the previous version with no reduced functionality or changes to the core workflow. Ultimately, while we have modernised Supervisor, it is not a new product and therefore is accessible by anyone with a current active maintained license, subscription or rental.

Aside from the modernised user interface, users can enjoy the convenience of the new ribbon menu and utilise greater customisation new dockable windows, alongside a number of small quality of life changes. We are looking forward to your feedback which can now be provided directly from within Supervisor itself with the new 'Send Feedback' form under the Help menu. Through this form, you can optionally provide us with contact details so that we can discuss your feedback and ideas with you directly.

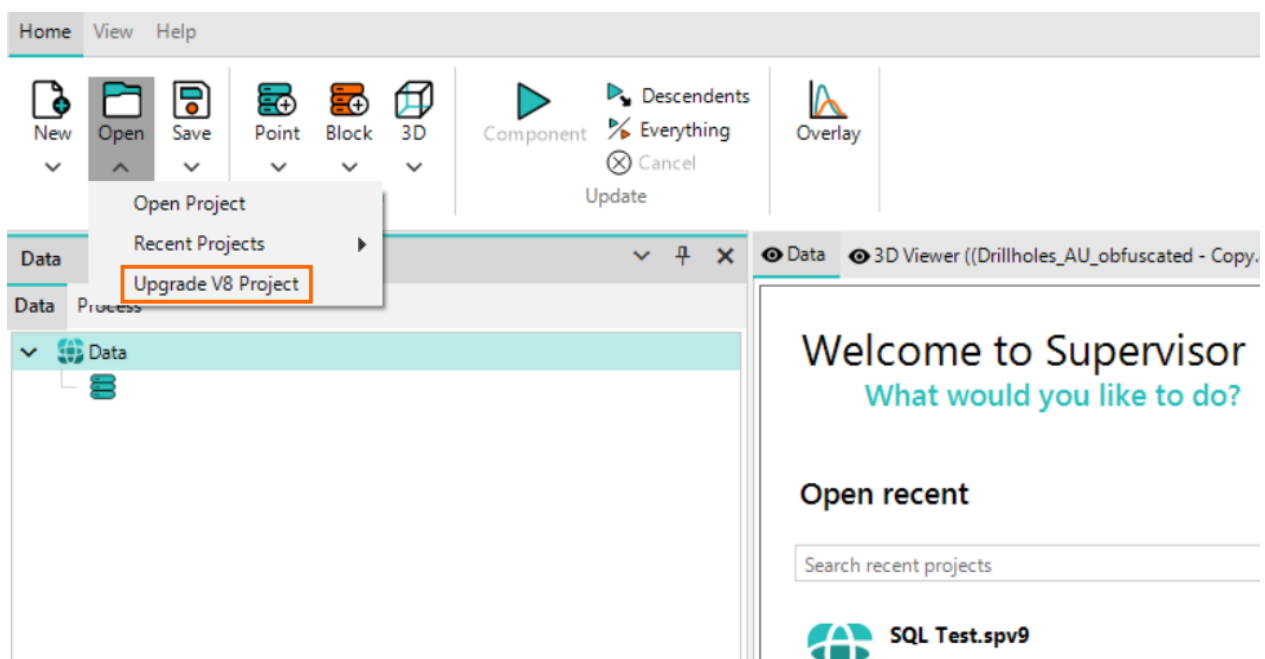
We hope that you enjoy the new Supervisor experience and look forward to continuously improving our solutions into the future.



## Upgrading a Version 8 project

Upgrading your Supervisor projects from version 8 to version 9 is a straightforward process. Launch the Supervisor 9 application and select the 'Upgrade V8 Project' option from the **Open** menu. Select the version 8 project you wish to upgrade, and the application will create a duplicate of this project in version 9 format.

Please be patient as the creation process may take some time. Once the new project is created, it will need to be updated for the results to be regenerated. It's important to note that once a project is upgraded to version 9, it cannot be reverted back to version 8. Make sure you are ready to upgrade before proceeding.



## Updating the License Manager

To ensure there is no disruption to the ongoing experience using Supervisor, a change has been rolled out to all existing license holders which converts current Version 8 licenses to a bundled solution. Each bundle contains two licenses, one that supports version 8 installations and one that will support all versions from 9 onwards.

The Version 9 installer comes bundled with version 6.2 of the Datamine License Manager, which should ensure that it correctly detects the new license types and structure. For any issues, please reach out to Datamine support for further assistance and troubleshooting.

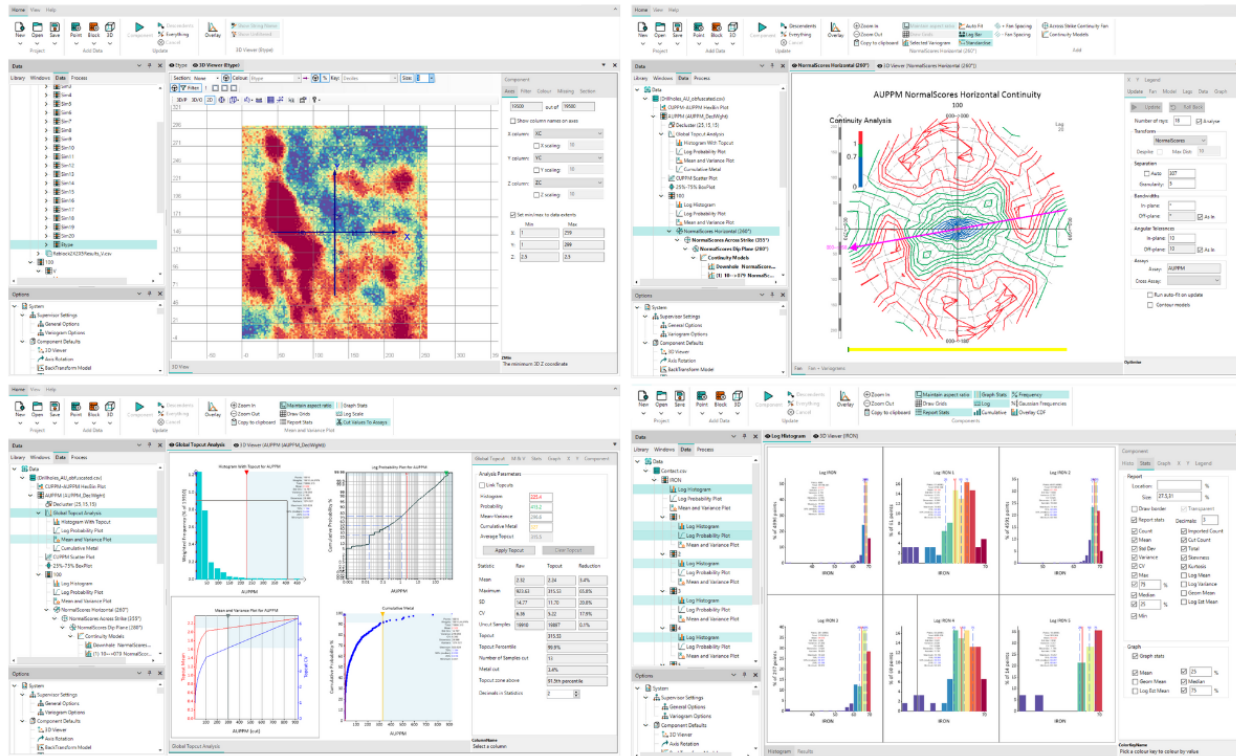


# Changelog

- Improved the error message associated with trying to add a component to the Process Tree when no data is loaded.
- Removed the button link to the online LKNO video from the Property Panel.
- Fixed the resolution of vertical text to be easier to read.
- Fixed an issue that prevented interaction with the floating stats table in new components.
- Corrected the outputs for Leapfrog which could be incorrect in some situations.
- Reduced the number of decimal points for the Leapfrog conversion to enhance readability.
- The UI has been replaced with a new platform and all components have been updated to function as in version 8.
- The Histogram property panel has been redesigned.
- A Ribbon menu has been added which has all the previous functionality of the old menus and vertical toolbar.
- An error capturing tool has been added, which can automatically and anonymously report software errors to the Supervisor team for early correction.
- Updated the .NET platform to version 6 and updated every component to be compatible with this version.
- Updated Supervisor branding with latest logos and colour schemes.
- The about popup is more informative.
- Added a new Welcome page to the Data Tree root node.
- Updated several aspects of the Tree and Windows to allow greater user customisation.
- Anonymous usage data may now be optionally provided to the Supervisor team to help identify high-use components for improvements.
- Several default colour schemes have been updated.
- Updated coloured text in the Data Loader data tables from blue to teal.
- Modified the 'ABORT UPDATING' text on the main canvas to 'UPDATING'.
- Several components in the Options tree have been renamed to be related to their actual options.



- Several Library components have had their names updated to relate to their function.
- The version number has been added to the startup splash screen.
- Updated the default colours for the Histogram and several percentile colour keys.
- Updated splash and install wizard images.





## Known Issues

Known issues are non-critical bugs that are currently being developed, but were not able to be included in this release. All known issues will be resolved in the next minor release.

- When selecting multiple components, the first selected component cannot be deselected from the group.
- The line of regression on Hexbin plots is obscured by the hex elements.
- Editing multiple thresholds at a single time can cause an error.
- Changing the Y-axis label in the GT Curve component does not update the legend label.
- The Load Summary does not provide detail for each encountered loading error.
- The Cut-Off Value table in the Grade Tonnage Curve component for block models does not create a scrollable element. Workaround: The list of cutoffs can be created in an excel spreadsheet and pasted into the Cut-Off Values table.



Datamine enables efficient and sustainable mining through the application of world-leading technology and services.

## Read the Docs

[docs.dataminesoftware.com](https://docs.dataminesoftware.com)

## Get in Touch

[www.dataminesoftware.com/contact](https://www.dataminesoftware.com/contact)

[www.dataminesoftware.com/support](https://www.dataminesoftware.com/support)

